

# Strawberry Fair Newsletter

1<sup>st</sup> Edition

9<sup>th</sup> August, 2018

## What is the Strawberry Fair?

On this fun day the oval and courts are transformed into a riot of colour and activity. There are stalls selling a myriad of goods from books and home ware to gifts, cakes and jewellery. We have games to keep the kids busy and food stalls that offer yummy lunch and snack lines. A café and a tavern cater for those who want a break and the ongoing entertainment keeps the oldies amused for hours. It is always a BIG day with a great community feel helped by the number of volunteers from the school, local churches and other community groups. Old scholars, past teachers and neighbours all make appearances and enjoy the camaraderie.

## Strawberry Fair Coordinator

The coordinator is responsible for the overall vision, structure, and communications for all areas of the fair. They oversee, support and link the focus group members and stall convenors with the school management team.

## Strawberry Fair Focus group

The Focus Group are a group of individuals from the community driving the aspects of the fair which are not related to specific stalls. The focus areas are marketing, production, fundraising, outside stalls, amusements, strawberry trail, teachers and staff communication and entertainment.

## Strawberry Fair Stall Convenors

The stall convenors are responsible for the implementation and facilitation of their stall on the day. They will work alongside the stall committee to arrange appropriate equipment and alongside the designated class teacher to make sure there is plenty of support. Each class is responsible for a stall and parent volunteers cover the stall by providing one hour of their time throughout the day.

Convenors are needed for the following stalls in 2019:

- Plants                      - Ice Creams                      - Café                      - Books                      - Cakes

These stalls are very rewarding and have a lot of support from the school community. If you're interested, why not run the stall with a friend, and have some fun! There are some great opportunities this year to learn the ropes, just come and ask.

## Strawberry Fair is on Sunday, 4th November from 10am to 3pm

### Help Before the Event

During the weeks leading up to the fair we take in massive amounts of clothing, white elephant goods, books and raffle items. We need parent support to supply these items so please clean out cupboards and sheds before October. We also need parents with a few minutes to spare before picking up the kids to sort and store these goods, so if you have time pop into the office and see Judy. We are very grateful for donations. If you have business connections, this is a great way to advertise as well as helping out the school. There is often a call for people who can help out with trailers to transport equipment. Helpers are also needed for class cooking sessions to make goods for the cake stall.

### Last Minute Help

Saturday is the big day and we need as many helpers as we can to put up stalls, umbrellas, signage, tables and trestles. Refrigerated vans need to be loaded and stalls laid out.

On the day, people start arriving before 10 and we start the huge pack up at 3. After pack up, the Tavern is open with the offer of a free drink and sausage to thank our workers. Most people wait around for the announcement of our takings for the day.

## STRAWBERRY FAIR NEWS



**Next meeting – Wednesday, August 15<sup>th</sup> – 2.30pm**  
**ALL WELCOME!**

### PANCAKES STALL

Does anyone have a flat plate BBQ that we could please use for pancakes on Fair day?

### DO YOU HAVE?

Empty gift boxes or baskets please that can be reused.

### WHITE ELEPHANT

Preloved household items are now being accepted for our White Elephant Stall. Small working electrical is acceptable. Please no T.V's, computer monitor or knives. Large furniture items will be accepted on Saturday 3<sup>rd</sup> November. Please **take items straight to the shed** on a Monday or Thursday. Jim will be around to help.  
**No donations to be left in the main building.**

### SATURDAY MORNING DROP OFF.....

We have also organised some dates where our Fair shed will be open on a Saturday morning. Please enter via Swift St. These dates are:

**Saturday, 18<sup>th</sup> August – 9.00am – 11.00am**

**Saturday, 29<sup>th</sup> September – 9.00am – 11.00am**

**Saturday, 13<sup>th</sup> October – 9.00am – 11.00am**

**Saturday, 3<sup>rd</sup> November – 9.00 – 11.00am (Bigger items will also be accepted on this day.)**

### BOOKS – CLOTHES

Donations for these stalls are welcome but please take straight to our Strawberry Fair shed on a Monday or Thursday. Jim will have it open and stops double handling if you can deliver straight there. Thanks

### TRAIL BAGS

This year our trail bag will be different. Students will follow the trail to collect items and enjoy the atmosphere of the Fair on their walk. More information will be given out soon.

### We still need.....

**DONATIONS** – all donations gratefully received for the Silent Auction. Do **YOU** have any ideas?

Please contact the front office now if you can help or provide names of businesses / persons willing to donate. Do you have a business? The Silent Auction could be great advertising for you and your business!

## BABY FOOD JARS

Room 2 is on the hunt for empty Baby Food Jars for strawberry fair. If you have any spare jars, please drop them to room 2 or your classroom teacher!

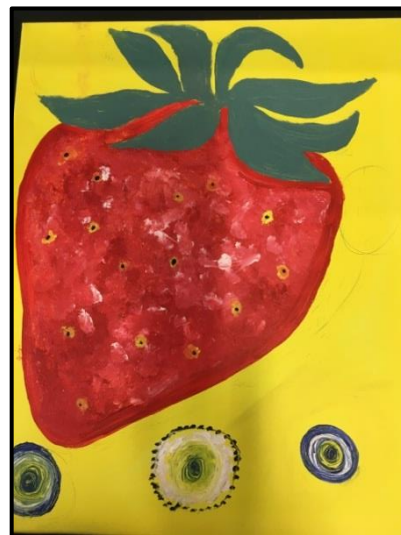
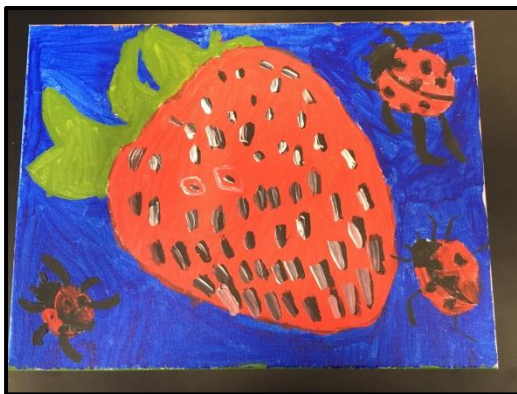
Thanking you.



# Can YOU help?

**Come and be involved and join in on the fun!**  
**It's an AWESOME community project**  
**and the kids really enjoy knowing their parents and family are involved!**





WOW.....

Thank you and well done to the Art class kids who worked hard last holidays to produce these paintings for our Strawberry Fair. We will display them in our foyer, and also on Strawberry Fair day. Keep your eye out for our advertising post card later to see some of these paintings are displayed on there too.



## Stalls of the 2018 Fair with Classroom Support

<u>ROOM NO.</u>	<u>TEACHER</u>	<u>STALL</u>	<u>CONVENOR</u>
20	Alex Yin	SILENT AUCTION HOT DOGS	Jo Healey & Olivia Kay Kathy & Dion Pammenter
19	Jordan Wallis / Erin Hodges Joy Groves	YIROS  BOOKS	Effie Bias  Tammy Jarvis
18	Charlotte Candlish & Sue Boggiano	BOOKS	Tammy Jarvis
16	Eva Pontikinas	LUCKY SPIN	Eva Pontikinas
15	Martin Richards	CLOTHES	Emma Blanch
14	Morgan Scottney-Turbill	CURRY BOOKS	VG Tammy Jarvis
13	Laura Potts	CLOTHES 'STUDENT VENTURES'	Emma Blanch Simone Morrison
11	Toni Hall & Megan Colmer	WHITE ELEPHANT	Sammy Jones Tash Dean
10	Elise Davies	KNOCK EM DOWN  WHITE ELEPHANT	Michael Rohdenburg  Sammy Jones & Tash Dean
9	Kendall Proud	PANCAKES	Lyn Empen
8	Robyn Collins	NACHOS CAFÉ	Simon Kreig and Carly Steen Rebecca and John McQueen
7	Sheridan Weber	CAFE	Rebecca and John McQueen
6	Rachel Bell	PLANTS	Dani Anson
5	Ebony Drake	ICE CREAM  YIROS	Kate Bishop  Effie Bias
4	Sarah Newton	TRAIL	?
1	Caroline Fitzgerald & Georgia Gaitanis	CHIPS YIROS	Felicity Newton & Lucy Standish Effie Bias
2	Helena Lambrinos	CRAFT	Alice Pannenburg
17	Bernie O'Connor	BASKETS WIZZ FIZZ	Terezia Annand Bernie O'Connor

## Stalls of the 2018 Fair without classroom support

<u>ROOM NO.</u>	<u>ORGANISER/GROUP</u>	<u>STALL</u>	<u>CONVENOR</u>
	OSHC	BBQ	Dennis Shanahan
	Church	JUMPING CASTLE DRINKS BALLOONS EXTRA STALL SUPPORT	Nona Gregory
	Staff (roster)	TAVERN  RAFFLE	Shane Atkins  Sarah Reichman / Vicky Bashford
	Stage	ENTERTAINMENT Program  MC on the day	Joy  Jordan and students
	Food	CHICKPEA	Meenu
	Food	CAKES	Liza (Laura, Cymone, Carole: help in lead up & on day)
	Food	SUSHI	Belinda Pfeiffer

### **SECONHAND CLOTHES.....**

NOW COLLECTING... Good quality second hand clothes. Please clean out your cupboards and pass on those clothes that are no longer needed. We are now collecting, so would love your donations. Please bring goods to school on a Monday or Thursday as they can be taken straight to the shed by Jim our Groundsman. **- Emma**

### **CRAFT STALL**

Are now accepting ready- made craft items for their stall, cards, clothes, Christmas decorations, anything, These items would be gratefully accepted. OR.....If you are still making your special items, or want to soon start, the craft stall would be very appreciative of your ideas or what you have. More items, the merrier. Please contact us for more information if needed. [alicepanenburg@icloud.com](mailto:alicepanenburg@icloud.com) Thanks, **Alice Pannenburg & Stephanie Hensgen**



**Kids grow up and no longer need their favourite fluffy little toys. However, we would love these for our Strawberry Fair. Clean soft toys are welcome – please bring into the school on a Monday or Thursday, can be taken straight to the shed. Thanks**