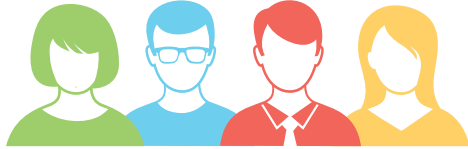


## WHAT IS A CHAPLAINCY SERVICE?

A Chaplaincy Service is provided by a Pastoral Care Worker (PCW) in a school community on behalf of the local combined Christian community to provide additional support as needed.



### Pastoral Care Workers

- Provide pastoral care in a 'first response' capacity to critical incidents, refer to specialist support and to provide ongoing presence and followup
- Work closely and in partnership with leadership and other wellbeing staff in schools to provide pastoral care and practical support to students, families and staff as requested
- Are well positioned to work across the whole school to 'build a sense of' community, harmony and cohesion
- Are trained and equipped to provide their school with a unique dimension of social, emotional and spiritual support in line with the DECD wellbeing framework

### Partnerships

Your local school and your local church work together to provide your Pastoral Care Worker.



## WHY A CHAPLAINCY SERVICE?

### The Facts

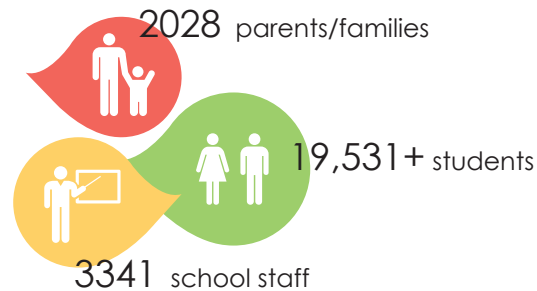
Students today face a more complex and challenging environment than ever before.

- 15% of young Australians are currently experiencing an anxiety condition
- Bullying is the leading social issue among SA students
- Just under half of all divorces occur among couples with children under 18
- 15% of SA students miss out on breakfast

source: ABS Statistics collected 2007, 2013

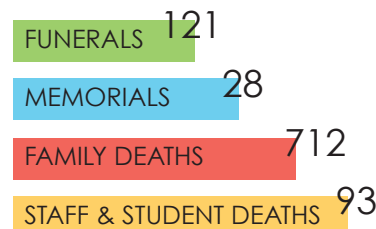
### Support in SA Schools:

#### Outcomes from a 2014 Survey



Figures based on results from 20 day survey

### Grief & Loss



Figures based on 5 monthly overview / \*PCW's address the top two social issues expressed by students in the 2013 ABS Census of School

### Other Activities

Mentoring  
Healthy Eating\*  
Support for Parents  
Suicide Prevention  
Anti-Bullying\*



Cut off and keep for reference

## PASTORAL CARE WORKER: SIMONE MORRISON



I am delighted to be a part of the Edwardstown Primary Community as your Pastoral Care Worker. I have lived in Adelaide for almost 20 years, I am married with 3 children, 2 of which are twins, there is a 13 month age gap between

my eldest and the twins, so I learnt very quickly how to juggle and adapt.

I am a lover of animals with a soft spot for dogs especially spotty ones, our family dog is a rescued Dalmatian and he is the 3rd one we have had.

I am a qualified Youth Worker, passionate about connecting with kids and supporting them through life.

### My regular days at school are:

Tuesday, Wednesday, Thursday and Friday

### Contact Details

phone: 8293 2753

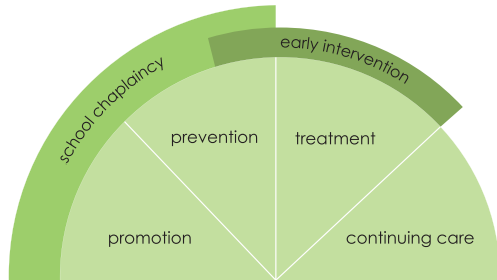
email: [simone.morrison196@schools.sa.edu.au](mailto:simone.morrison196@schools.sa.edu.au)

Please do not hesitate to make a time to come and see me, feel free to email me or leave a message at the front office, I will contact you as soon as possible.

I am located opposite room 5 at the top of the stairs.

## CHAPLAINCY & WELLBEING

Chaplaincy Services promote student wellbeing, engaging young people in activities that are preventative and which support early intervention and referral of mental health issues.



## PRINCIPALS ARE SAYING...

The benefits of the program are clear and include; increased attendance at school by identified students, social and emotional support, increased access to social skills programs and families feeling supported in time of crisis such as suicide, death and family separations.

### Primary School Principal

A lot of student problems never eventuate because Trev has provided support and encouragement early on. The students always walk away from their time with Trev with more bounce in their step....It is hard to imagine our school without thinking of our Worker.

### High School Principal



Supporting School Communities  
Across South Australia Since 1991

**Schools Ministry Group (SMG) coordinate and facilitate Chaplaincy Services in government schools across South Australia.**

- School Chaplaincy commenced in SA Government schools in 1986.
- SMG partners with schools, local churches, state and federal governments to deliver Chaplaincy Services through the engagement of a Pastoral Care Worker.
- SMG works collaboratively with these partners in the recruitment, supervision and ongoing professional development of PCW's to ensure the placement of high quality workers who are well equipped to support young people and strengthen communities.
- Pastoral Care Workers are funded from two main sources - the National School Chaplaincy Program and the local church communities.
- The Chaplaincy Service provided through your PCW is a voluntary program offered to school communities.



[www.smg.asn.au](http://www.smg.asn.au)



Young People and School Communities  
Discovering purpose, value and hope

## EDWARDSTOWN PRIMARY SCHOOL



## OUR PASTORAL CARE WORKER

A Chaplaincy Service provided by  
Schools Ministry Group (SMG)

